

Thoughts on Software Sustainability from OLCF

Bálint Joó (joo AT ornl.gov) – Oak Ridge Leadership Computing Facility, Oak Ridge, USA

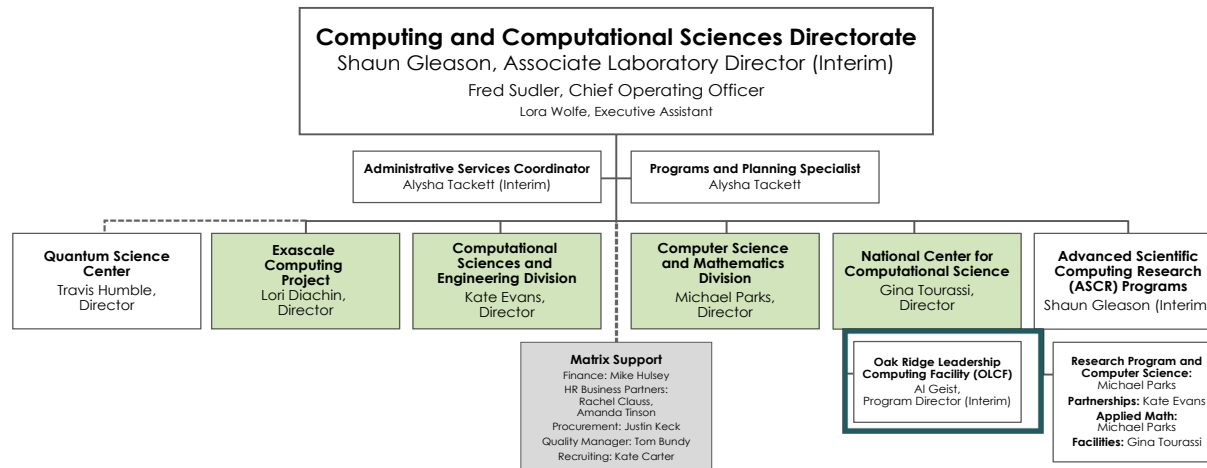
PESO Community Meeting

Argonne National Laboratory, June 8-9, 2023

ORNL is managed by UT-Battelle LLC for the US Department of Energy

About OLCF

- OLCF operates the worlds largest computer systems
 - Frontier (HPE/AMD) #1 on Top500 (1.19 EF HPL)
 - Summit (IBM/NVIDIA) #5 on Top500 (148 PF HPL)
- Primarily support INCITE and ALCC projects
 - 37 INCITE projects in 2022, 42 in 2023 (+/-1 due to me miscounting)
 - 24 ALCC projects in 2022-23 period
- OLCF liaisons
 - Assist in porting, optimizing, application workflows for users
 - Advocate for user needs
 - Collaborate scientifically with the users (as appropriate)
- Our place in the directorate org chart:



OLCF Frontier



OLCF Summit

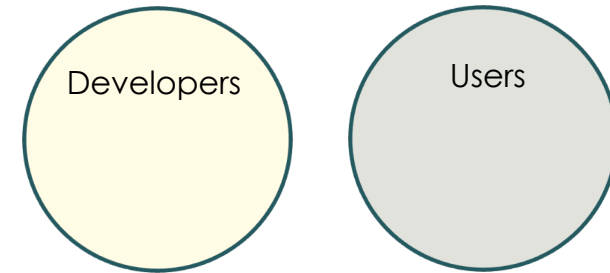
OCLF's General Philosophy

- We want to enable our users to reach their scientific aims
- We want to help them as much as they want us to:
 - Some projects need a lot of help
 - Some projects need none
 - Our general preference is closely coupled, bespoke engagements
- We want to support and sustain software that we or our users need
 - We are reactive in this regard
 - Our liaisons may **suggest solutions**, but we will not proscribe them
- The bulk of software that runs on the system is user applications and dependencies they bring with them
 - OLCF primarily supplies the core programming environment and low level libraries
- OLCF is generally not staffed (time or expertise) to directly support the software used on the system
 - The liaisons and UA staff will help solve problems or find workarounds, but...
 - Real support necessarily comes from vendors or third-party software providers

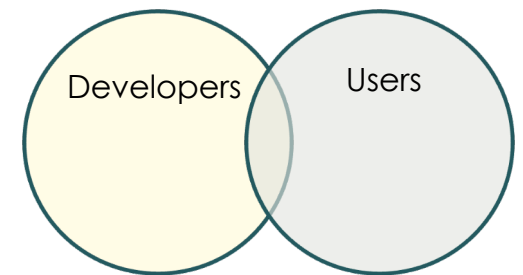
We want user software to run well on our systems

- Certain products are important dependencies for a large body of our users
 - Programming models, Profiling packages, build systems, basic libraries (BLAS, etc.)
 - Some we may support through funding (e.g. Kokkos)
- Others we anticipate will be brought along by our applications
 - e.g. Larger math libraries come to mind (PETSc, Trilinos,...)
 - Liaisons provide ECP ApplInt-like support for these
 - E.g. Report bugs to and Shepherd resolution of issues with Vendor partners, ...
- We don't want a pre-installation of a library to carry an imprimatur of endorsement by OLCF. Library/App pre-installs are on a pragmatic, user-driven, case-by-case basis
 - We do provide User Managed Software areas on request

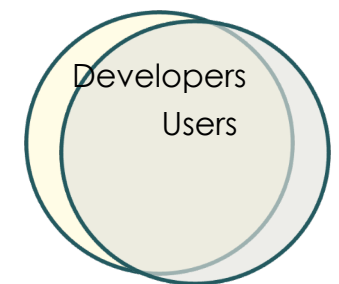
User Community A:



User Community B:



User Community C:



Certain things we are passionate about

- Engagement with the Software Sustainability Community
 - **David Rogers** at OLCF leads Software Sustainability WG in SciEng Section.
 - He is an excellent point person: [rogersdm AT orn1.gov](mailto:rogersdm@ornl.gov)
 - He interacts with other groups within ORNL (e.g. CSED), and with IDEAS
- Good User Education and Training
 - tools, software best practices, writing sustainable software, productivity
 - strong engagement in community efforts by our User Engagement Section
 - this includes training on many products (e.g. through hackathons, or directly)
 - Liasons can suggest libraries/technologies they feel can help users
 - I am a strong proponent of Kokkos, CMake, Git (de-facto 'standard' tools of the trade)
 - But not all of my suggestions are accepted – and that is OK.
- I personally strongly want to advocate for CI on LCF hardware
 - Push level CI is industry best practice.
 - Often, our newest hardware is not yet available in the cloud.
 - Even a fully open source stack would do so much for us.

Acknowledgements

- This research used resources of the Oak Ridge Leadership Computing Facility, which is a DOE Office of Science User Facility supported under Contract DE-AC05-00OR22725.